



*Find out **WHY***
Modern windows,
doors and conservatories
offer you so much more

*You'll be **AMAZED** at the huge benefits
in replacing your old PVC-U
windows and doors.*

Your guide to replacing the replacements



Where do you start?

It's estimated over 70% of properties in the UK have double-glazing, but many of these were installed more than ten years ago and would benefit hugely from being replaced.

This guide is designed to help you understand why modern windows, doors and conservatories are among the best investments you can make in your home.

What makes a modern window so good?

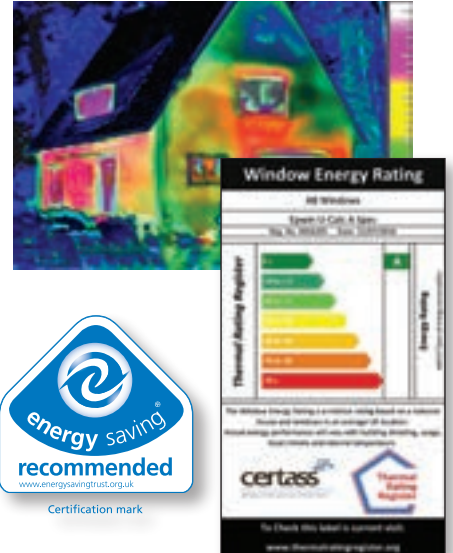
1 They save you money

How much depends on how many windows you have and how old they are, but as a guide, the average home that contains 15m² of glass could save over £250 a year in energy bills (for more details ask your installer for a copy of our guide on energy rated windows).



2 How energy efficient they are is now easier than ever for you to understand

Modern windows, like fridges, freezers and washing machines, can now carry energy rating labels to make it easier for you to find the most efficient solution for your home. Ask your installer to show you the energy rating certificate for the windows they intend to install.



Modern windows have never been more secure



Modern windows are now typically glazed from the inside, so burglars can't easily remove the glass. Simple window locks have now been replaced with ultra-secure shoot bolts. Dedicated locking mechanisms are fixed securely into the frames, which in turn boast thickened wall sections for increased strength and security. Look for products that bear the Secured by Design logo - the official Police initiative for security and "designing out crime" (for more details ask your installer for a copy of our guide on security).

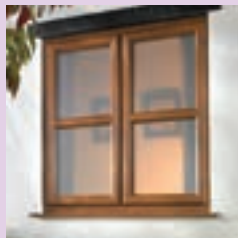
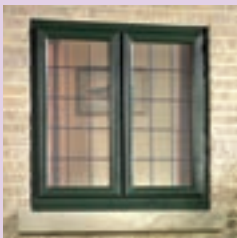
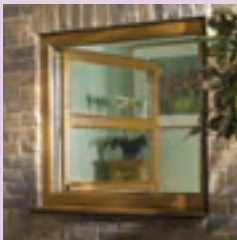
4 *They have never looked so good*

Modern windows have never offered you more options to enhance your home. Sightlines are now slimmer than ever, with 'low-lying' gaskets barely visible. Frames no longer need be white or shiny and smooth, as modern coloured foils are hard to distinguish from stained timber in look and texture. (For more details, ask your installer for a copy of our guide to great-looking windows.)



5 *Modern windows have never offered so many styles*

Reversible and tilt-turn windows offer more ventilation options, as well as making cleaning possible from the inside. The technology to curve window frames to suit your home has been perfected and designs such as French casement deliver maximum ventilation and excellent egress facilities when open.



6 *They have never contributed more positively to the environment*

Modern windows made from Profile 22 can carry a recycled content of up to 40% - using PVC-U that otherwise may have gone into landfill. The best are reinforced with 100% recycled reinforcement material for extra strength and stability, and can save over 26 tonnes of CO₂ emissions over the lifespan of their installation



So don't move – improve. Installing modern windows offers you a better rate of return in savings than putting your money in the bank, especially when you add in the savings of never having to paint or varnish a window again.

What makes a modern door so good?

1 *GRP composite entrance doors - The look of timber with performance no other door can match*

First came timber doors, which needed maintenance and expensive painting or varnishing, as well as being prone to warping and bowing. Next came PVC-U panel doors. Lower maintenance, but a compromise when it came to looks. Now the very best modern doors are GRP composite doors.

First impressions count and you can make no better first impression than choosing a composite door that is virtually impossible to tell apart from a new timber door. Same styles, same colours and finishes, only the GRP composite door never needs to be painted or varnished, offers high security multi-point locks as standard, and is up to SIX TIMES more energy-efficient than its timber equivalent.



2 *Bi-fold doors - Connecting indoors with outdoors, without compromise*

A recent innovation. Also known as folding doors, bi-fold doors can fold in or out to truly connect the inside to the outside and create the widest possible opening to your home. Patios become additional summer rooms and light and space flood into your home.





3

In-line sliding doors - The smooth operator

Sliding doors have come a long way over the last ten years. The best are very easy to live with, thanks to their balanced easy-glide action, low threshold option and low-maintenance construction.

They allow you to express your own individual style with our range of colour and finishes from clean, crisp white to Antique Oak, Rosewood and Mahogany. The very highest levels of security are achieved through multiple locking points and a built in 'anti-jacking' system that ensures the door cannot be lifted off from the outside. For more details ask your installer for details on the range of patio doors.

4

Modern doors – Have never been more secure or looked so good

Door furniture now sets a standard never seen before. Multi-point locks deter the most persistent intruder and recent developments in "anti-manipulation" cylinders finally offer solutions that prevent any dispute with insurers that a burglar forced entry to your home through a door.

Handles now offer more designs and more finishes than ever to complement your home, and hinges needn't be an eyesore that spoil your door installation. Glazing offers more decorative solutions than ever to complement your home.



So don't move – improve. Installing modern entrance doors, patio doors or bi-fold doors offers you a better rate of return in savings than putting your money in the bank, especially when you add in the savings of never having to paint or varnish a door again.

What makes modern conservatories so good?



1 Modern conservatories don't require a compromise on design

For years the conservatory in the UK was a sun lounge that allowed you to sit in the garden all year round. Then came the "white box" solution that was bolted onto your home whether it looked good or not. Traditionally Victorian in style, the promise of more usable space seldom lived up to expectations, as the lack of square corners made for dead space in a room that furniture couldn't easily occupy.

Now modern, precision-engineered conservatories are tailored to your individual need, style, budget and space available, be it traditional or modern, simple or complex.

2 A room you can live in all year round

Too hot in summer, too cold in winter, problems if south or north facing, all these issues have now been overcome through product innovation. These problems are easily solved by choosing a modern conservatory that remains stable and offers weather-tightness as temperatures fluctuate.

Underfloor heating takes up less wall space and specialist air conditioning units are now commonplace. Roof ventilation can now be manual or automatic, linked to rain sensors and a thermostat that ensure your conservatory remains cool and dry, whilst the glazing itself can be specially coated to reduce heat loss and solar gain.



Modern conservatories – So much easier to keep clean; so much quieter in the rain

Most conservatories that are at least ten years old have a polycarbonate roof. Re-glazing them in glass is often not a practical solution as they lack the structural integrity required, leaving homeowners with tired-looking roofs that need regular cleaning, offer little insulation, amplify the sound of rain and are prone to insects getting lodged in flutes, causing staining.

So more and more homeowners are rebuilding their conservatory, choosing a glass roof - more thermally efficient, excellent at dampening down the sound of the British weather and self-cleaning - an altogether complete solution.

4 A room that adds value and beauty to your home

Conservatories have always been one of the most cost-effective home improvements in terms of the percentage of cost that is added immediately to the value of your home. Less restricted by the need for planning permission, the key is to not only add space, but also ensure that the conservatory extension best complements the look of your home.

At first, you could have any colour as long as it was white. Then came a limited choice of wood foil finishes. Now painted roofs can be matched exactly to the look of your home.



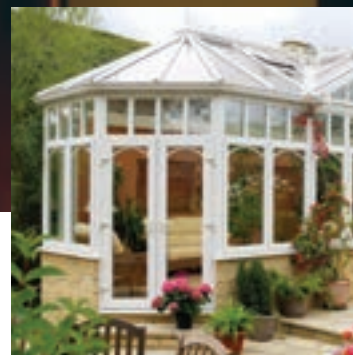
5 Modern conservatories combine the best products in one complete solution

Modern windows and doors specially designed for a conservatory, matched with a precision-engineered roof to give you better performance than ever.

So don't move – Improve. Installing a new conservatory offers you a better rate of return in savings than putting your money in the bank, especially when you add in the savings of never having to paint or varnish again. For more information ask your installer about creating your new, modern conservatory.



Your guide to making the most out of your home



KJM Windows & Conservatories
9 Mylen Business Centre
Andover
Hampshire
SP10 3HR

Tel 01264 359355
Fax 01263 353441

[email sales@kjmgroup.co.uk](mailto:sales@kjmgroup.co.uk)

www.kjmgroup.co.uk



PROFILE 22 is an international PVC-U profile system supplied to local independent manufacturers who contract to install windows, doors and conservatories. PROFILE 22 SYSTEMS cannot be held accountable for manufacture or installation by independent companies.

All information in this publication is provided for guidance only and is given in good faith. As it is company policy to continually improve products, methods and materials, changes of specification may be made from time to time without prior notice. This statement does not affect your statutory rights. © Profile 22 Ref: PRO/11004

THE BEST WINDOWS ARE MADE FROM

