

# Code Green for New Build



The practical guide to using PVC-U windows and doors  
in new build private, social and commercial properties



# Why Trust Profile 22?

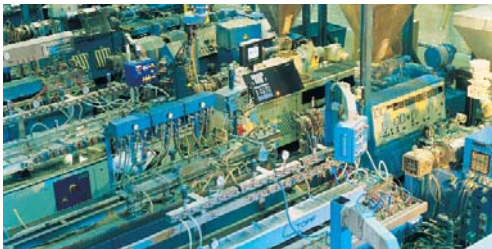


Profile 22 is the UK's leading PVC-U window and door systems company boasting more than 30 years' experience.

In fact Profile 22 has been dealing with house builders since the early use of PVC-U in new build housing. We introduced the original 'press to fix' window and former in the UK, which our technical team developed by working closely with house builders. Since then we have remained at the forefront of the industry, developing our business and products alongside house builders anticipating the needs of this evolving market.

Our products not only deliver performance advantages and unrivalled green credentials, but you have the benefit of an experienced team who are committed to offering you consistent and reliable support you can count on.

The best windows  
are made from  
Profile 22





# Practical Steps



The government's commitment to reducing carbon emissions has led to the introduction of the Code for Sustainable Homes and a long-term goal to create carbon zero homes.

The Code introduced in 2007 is now a strategic driver in the ongoing review of the Building Regulations and the future of social and private house building and development in the UK.

As a buyer in the new build market, you will be more than aware of the pressures that legislation has put the house builder under.

There is confusion and misinformation in the marketplace and Profile 22 can guide you to the best option for your project.

This guide provides invaluable advice in the specification of windows and doors for social, private and commercial new build projects.



## Professional Service

We know you expect high standards, reliable deliveries and consistent high quality. Profile 22 and its network of Approved Commercial Manufacturers provide this as standard – bringing you a positive experience through a professional service.

Whatever the size of your project you will receive total commitment and unrivalled knowledge from our team, who understand the requirements of your supply chain. You will receive:

- Comprehensive specification advice including the extensive choice of products and valuable legislation information
- Design service and assistance including technical drawings
- Liaison with architects and surveyors to ensure the window designs comply with Building Regulations and provide you with optimal performance and points for the Code
- Clear project planning
- Complete pricing breakdown
- Reliable lead times and scheduled site deliveries
- Approved Commercial Manufacturer with specific new build expertise and local knowledge



# Code for Sustainable Homes



## Private, Social and Commercial

According to the Department for Communities and Local Government, homes account for around 27% of the UK's carbon emissions, a major cause of climate change. As part of its commitment to reducing carbon emissions by 60% by 2050, the government's Code For Sustainable Homes was launched.

New houses built to the standards set in the Code for Sustainable Homes are more energy and water efficient, produce fewer carbon emissions, boast lower running costs and are better for the environment.

As you know a home can achieve a sustainability rating from one to six stars depending on the extent to which it has achieved Code standards in nine categories. One star is the entry level - above the level of the Building Regulations and six stars is the highest level.

A rating against the Code became mandatory for all new homes in May 2008, and is already included in the Home Information Pack (HIP) for the sale of all new homes. It allows private developers to use the Code as a marketing tool to differentiate themselves in a highly competitive marketplace through the rating of the homes within the development.

For new social new housing funded through the National Affordable Housing Programme, a minimum three-star rating against the Code is currently required for any bid for funding to be accepted. Builders involved in the provision of new housing for local authorities and RSL's need to be confident they can achieve this.

Going forward Code Level 3 will be the minimum standard from April 2009 as the Government strives to achieve zero carbon homes by 2016.

At Profile 22 we understand the pressures this puts the sector under and we are committed to working closely with house builders within the private, social and commercial property arena.

Profile 22 and its experienced network of Approved Commercial Manufacturers are already successfully working alongside house builders and developers across the UK from design to completion, to ensure the best possible sustainable products are specified, manufactured and installed.



Selecting the right products for every element involved in building a new house is crucial, every point is needed to achieve the Code and ensure the project is awarded the best star rating.

Profile 22's portfolio of window and door systems are not only highly thermally efficient, but they are able to use both recycled materials in their composition and be fully recycled at the end of their impressive 35 year life-cycle, more than 10 times. This ultimately will add to the overall performance of the property and importantly its final rating and certification.



# Windows



## 60mm and 70mm systems

We offer a complete suite of profiles so the right product can be chosen whatever the installation.

Open-out windows are available in a variety of single or multi-light styles, using top hung vents, side-hung casements and fixed lights - all high performers fully compliant with the Building Regulations.



**FS70 Fully Sculptured 70mm System** - This system is as close as any PVC-U to achieve the aesthetics of timber with the performance and low maintenance benefits of PVC-U.



**FB70 Fully Bevelled 70mm System** - This bevelled suite was specifically designed for the commercial market, it is simple to make and fit and looks great on any new build house.



**FI70 Fully Integrated 70 mm System** - This is our fully integrated system that features 70mm profile but incorporates 60 mm sashes.



**FC60 - Fully Chamfered 60mm System** - This system can be designed bespoke to virtually any application because of its extensive choice of sash and bead options.



## Internal and external glazing

The Fully Bevelled 70mm system and the decorative Fully Sculptured 70mm system are both available internally beaded.

The Fully Chamfered 60mm system and the Fully Integrated 70mm system are available either internally or externally beaded.



## Sculptured, chamfered and bevelled

Profile 22 systems have been designed on the basis of full integration, utilising common parts and offering the house builder more design options.

These high performance systems have been carefully designed to meet the requirements of regional Building Regulations throughout the UK including variations for Wales, Scotland, Northern Ireland and for the Republic of Ireland.





# Windows



## Casement

Accommodates the full range of 60mm and 70mm window systems for a wider choice of product.

Open-out windows are available in a variety of single or multi-light styles, using top hung vents, side hung casements and fixed lights, complies with all high performance requirements of the UK Building Regulations.



## Tilt-Turn

These all-round locking, internally glazed, open-in, 60-70mm depth windows provide excellent security and weather tightness.

Operation provides improved child safety and the ability to carry out internal and external cleaning without risk - a vital consideration in high-rise applications.

In the tilt mode the window offers secure ventilation, an important factor in ground floor installations.



## Fully reversible and horizontal pivot

The 180° Horizontal Pivot internally beaded, 60-70mm frame depth window, allows easy and safe cleaning in high-rise and inaccessible locations.

Fully reversible 70mm depth, internally beaded windows, also allow easy and safe cleaning in high-rise and inaccessible locations. These windows can be completely rotated, without intruding into the room space.

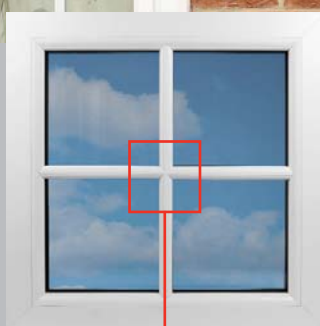




## Tradition with style

### Georgian bar

- Bars can be applied to one or both sides of the window or within the sealed unit, as required
- Available in white and woodgrain foil finishes
- Match traditional openings such as box sash or vertical sliding windows with modern performance



### Mock horn

- The appearance of mock sash and case windows can be achieved combining traditional design and aesthetics with the modern benefits of energy efficiency, enhanced security and noise reduction.



## Colours

A diverse range of coloured foil finishes designed to achieve a long-lasting, low maintenance and cost effective option for PVC-U windows and doors.

- Choice of finishes including white, woodgrain, cream and grey
- Extensive selection of coloured foils are available
- Long-lasting and low maintenance





# Doors



## Residential doors

A complete suite of 60mm and 70mm door solutions available in a variety of finishes to match infill panels to complement any home.

- Internally glazed as standard
- Open in or open out
- Medium and low thresholds (Document 'M' compliant)
- Dedicated hardware
- Chamfered, bevelled and sculptured designs



## Composite doors

Profile 22 has created a unique 70mm framing system for composite doors and side panels. Its sister company Evergreen is the leading supplier of GRP composite door slabs, cassettes and fire doors to fabricators in the UK.

- Dedicated hardware
- Unique 70mm framing system for composite doors and side panels
- Complete range of GRP composite doors and fire doors with unique cassette
- PAS 23 and PAS 24 enhanced security
- Range of low threshold solutions (Document 'M' compliant)



## In-line sliding patio doors

Profile 22 has designed and developed Britain's favourite in-line sliding patio door - PatioMaster.

- Slim stepped 86mm outerframe
- Internal sliding panels for added security - 2, 3 and 4 pane
- Optional low track, low threshold system
- Lowline gasket co extruded to sash
- Six point locking system for outstanding security
- Excellent weather performance and draft proofing
- Enhanced security options available





## French doors

Accommodates the full range of 60mm and 70mm window and door systems for a wider choice of product.

- Open-in, open-out options
- Dedicated floating mullion
- Two handle options
- PAS 23 and PAS 24 enhanced security



## Bi-fold doors

Manufactured from durable PVC-U, our thermally efficient, low-maintenance range of bi-folding doors effortlessly glide open to provide you with maximum utilisation of unobstructed space.

- |                              |                             |
|------------------------------|-----------------------------|
| ■ Thermally efficient        | ■ Multi point locking       |
| ■ Low-maintenance            | ■ Up to 22 different styles |
| ■ Range of finishes          | ■ 3 to 7 leafs              |
| ■ Smooth glide roller system |                             |



## Hardware

The Safeware range of hardware is unique to Profile 22, designed especially for our systems it covers our complete range of window and door products and provides you with an unrivalled choice. One of the many benefits of working with us is that we can offer you the flexibility to choose exactly the level of security and aesthetics that you need.

- High performance
- All products are manufactured to the highest levels of quality
- Secured by Design
- Full accreditation to all relevant BSI Kitemarks
- Backed by a 10 year guarantee

# Conservatory Roofs



## Aluminium roofs

Sister-company, Quantal, specialises in creating custom-made hand-finished aluminium roofs, ideally suited to complex installations where design is paramount.

- Complete roof kits glazed in glass or polycarbonate
- Finished to any RAL colour required
- Unique internal timber-clad options
- Bespoke highly engineered solution



## PVC-U roofs

Sister-company, Zoom, specialises in the supply of bar length conservatory systems clad with PVC-U.

- The ideal solution when you want to start fabricating your own conservatory
- Intelligent design requires fewer components, reducing stock holding, freeing up cash
- Unique network support package





# Curtain Walling



A purpose-developed curtain walling system from Profile 22, offers architects and house builders best value, greater choice and flexibility for large fenestration screens.

The high performance curtain walling is a thermally broken PVC-U clad aluminum system giving superior strength aesthetics, thermal efficiency and excellent weather performance, fully compliant to the latest standards and legislation.

- High performance, BSI tested
- Improved aesthetics
- Colour design with a full range of colour finishes
- Internal and external PVC-U cladding for colour and material match
- Accommodates full range of 60 mm and 70 mm window and door systems
- Choice of direct glaze insulation and spandrel panels
- Simple and quick installation



# Winfast Cavity Closer and Former System

Winfast cavity closer and former system is manufactured from 98 per cent recycled PVC-U and is designed to work with all modern methods of construction.

This versatile cost-effective cavity closer system provides many benefits such as a template for window apertures, simple and effective frame location and also features built-in sealing. This means that windows can be fitted internally, improving thermal performance and overcoming a raft of health and safety regulations. Designed to work just as effectively with timber and PVC-U window and doorframes, the system can be installed in cavities from 75 mm to 100mm.

Winfast is a made to measure system designed to drop straight into the cavity without adjustment on site. The sub-frame acts as horizontal and vertical damp proof membrane and can be used as a former as brickwork is built up stabilised with specialist brick ties, PVC-U brace and shoes. It allows you to install in minutes from the inside, without scaffolding and special brackets. The secret is a unique locking system (patent applied for) that fits the frame in place immediately. Once fitted, the frame only requires sealing under the cill and to the brickwork at the jamb head.

- BBA approved certificate no. 01/3827
- Window and door former for timber frame or brick and block construction
- Allows windows to be fitted from the inside
- Ensures Building Regulations compliance including Document L
- Head vents provides overhead ventilation to Approved Document F
- Designed for cavities 75mm - 100mm
- Window frames fixed by a unique cam system - no drilling required
- Window frames retained within a sealed rebate, improving thermal efficiency and weather resistance
- **Fast fit:** Time saving of up to 66% gained compared to conventional window installation
- **Cost effective:** Cost savings of up to 40% gained compared to conventional window installation
- Acts as a horizontal and vertical DPM
- 98% recycled content





# Green New Build System

Profile 22 has developed an innovative 'green' new build window system. It combines an overall recycled content of up to 60 per cent with the very latest in advanced performance energy WER rated 'A' to 'C', energy efficient window technology.

The window system features thermally efficient reinforcements (including sashes, transoms, mullions and outerframe) manufactured solely from 100% recycled composite material (RCM) and a cill with a 92% recycled content, co-extruded with a virgin skin to deliver superb weather performance and superb aesthetics.

It also features the new revolutionary former, fixer and cavity closer system, Winfast, which is manufactured from 98 per cent recycled PVC-U and is designed to work with all modern methods of construction.

These innovations in PVC-U building technology have made a significant contribution in PVC-U's recent 'A' and 'A plus' Green Guide rating from the Building Research Establishment - something that also scores PVC-U windows additional points under the Code for Sustainable Homes.



# Reinforcer

## Recycled Composite Material (RCM) Reinforcements

RCM is a recycled plastic window and door reinforcement manufactured from first generation post consumer waste PVC-U. Supplied as a substitute to either steel or aluminum sections\*, RCM is a sustainable and cost effective alternative that offers superb benefits.



Profile 22 is the first systems company in the UK to introduce recycled composite material reinforcements as part of our proactive stance to increase the environmental credentials of our product range. RCM closes the loop of the recycling process, offering increased thermal efficiency and has a minimum life-cycle of 35 years.

- **Manufactured from Post Consumer Waste PVC-U, Profile 22's unique and patent pending RCM reinforcement is fully and easily recyclable**
- **Can be used on full range of PVC-U window and door profiles**
- **Delivers 20%-30% increase in corner weld strength**
- **It doesn't corrode or rust**
- **RCM has a screw pull out value greater than standard steel reinforcement**
- **RCM makes windows easier to install**
- **The price of RCM is stable**
- **RCM is less conductive than steel increasing thermal efficiency making it easier to achieve a higher energy rating**

\* subject to window design criteria

## Sustainability

Using Dekura, Epwin Group's dedicated waste collection and size reduction company that has sites across the UK, we are able to ensure the economic and efficient recycling of PVC-U.

- **Closed loop recycling**
- **Post consumer and post industrial**
- **Life-cycle optimisation**
- **Environmental Management System to the requirements of BS EN ISO 14001**

You can discover more for yourself by visiting [www.profile22.co.uk](http://www.profile22.co.uk) or give us a call on 01952 290910

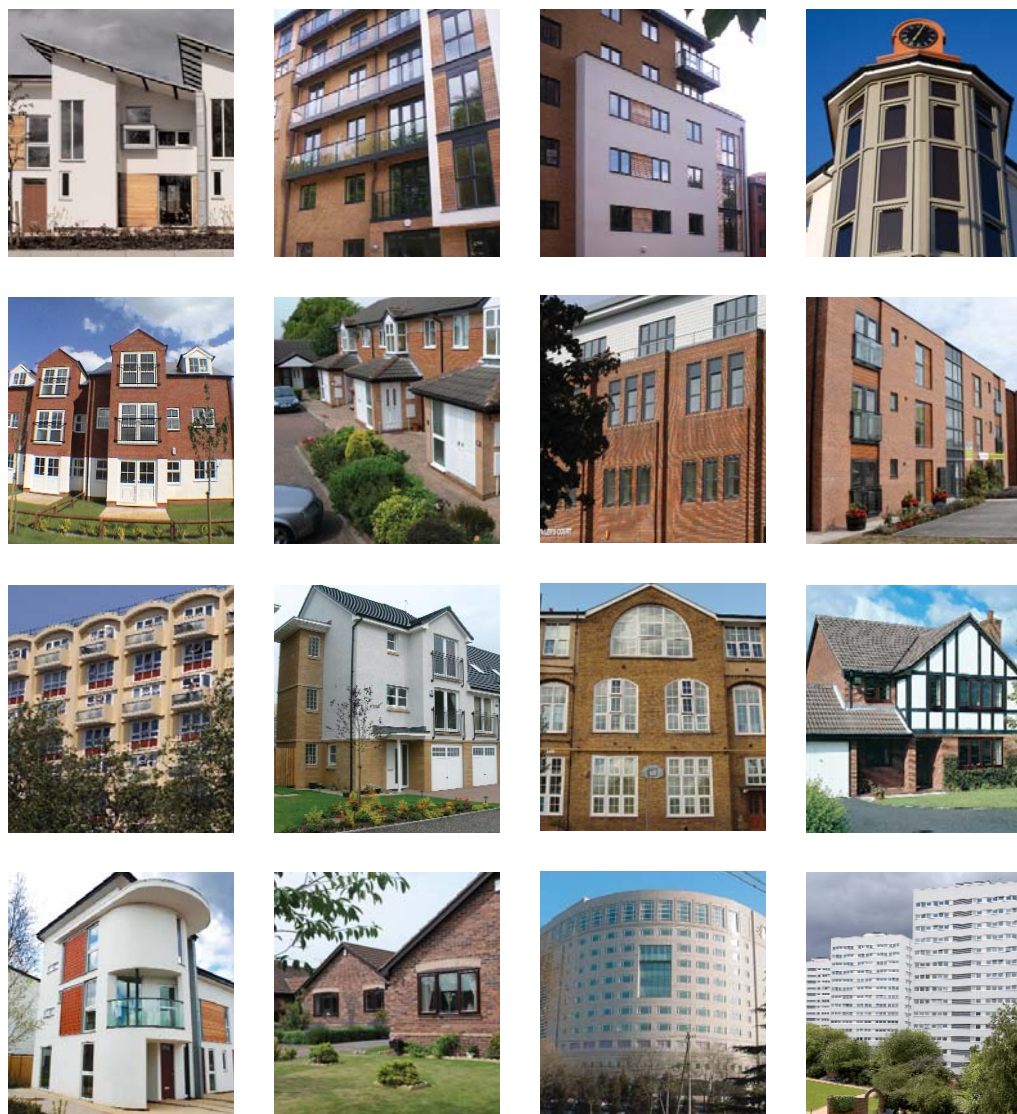
The best windows  
are made from  
Profile 22





# It's not just what we say, it's what we do

Nobody has done more than Profile 22 to develop innovative high performance PVC-U windows and doors for the new build sector, helping builders within the social, private and commercial new build arena to optimise their points for the Code for Sustainable Homes.



You can discover more for yourself by visiting [www.profile22.co.uk](http://www.profile22.co.uk) or give us a call on 01952 290910



For more information  
please contact us

**Profile 22 Systems**

Stafford Park 6, Telford  
Shropshire, TF3 3AT

**T : 01952 290910**

F : 01952 290460

W : [www.profile22.co.uk](http://www.profile22.co.uk)

E : [marketing@profile22.co.uk](mailto:marketing@profile22.co.uk)



PRO/9071



PROFILE 22 is an international PVC-U profile system supplied to local independent manufacturers and installers who contract to install windows, doors and conservatories. PROFILE 22 SYSTEMS cannot be held accountable for manufacture or installation by independent companies. All information in this publication is provided for guidance only and is given in good faith.

As it is company policy to continually improve products, methods and materials, changes of specification may be made from time to time without prior notice. This statement does not affect your statutory rights. © PROFILE 22.

Part of the Epwin Group.