



**ultraSky**  
by ultraframe

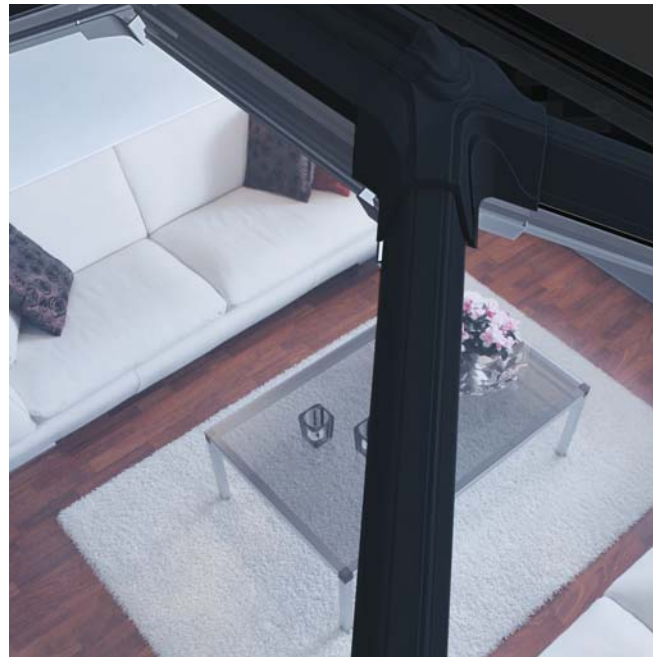




Flood  
light  
into your  
home  
with an  
UltraSky  
rooflight

**ultraSky**  
by ultraframe





Install in a new build extension, Orangery, or insert into an existing flat roof, an UltraSky rooflight will help you add the feeling of space and natural light to your home

Whether it's for a living room, dining room, kitchen, bedroom or bathroom the UltraSky rooflight will be the perfect stylish solution for you.



**ultraSky**  
by ultraframe



The UltraSky rooflight is stunning, enhancing any style of property, traditional or modern alike

#### SIZES

The UltraSky rooflight is available in a number of bespoke rectangular sizes ranging from 1m x 1.5m to 2m x 4m.

#### COLOUR OPTIONS

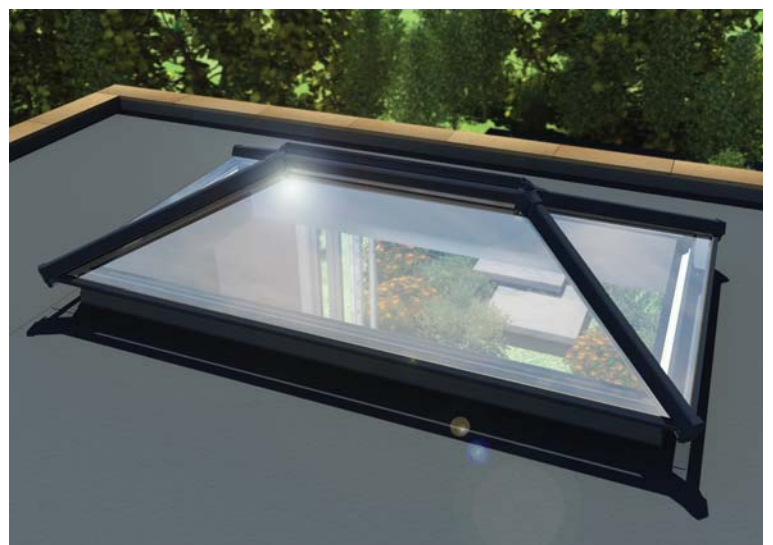
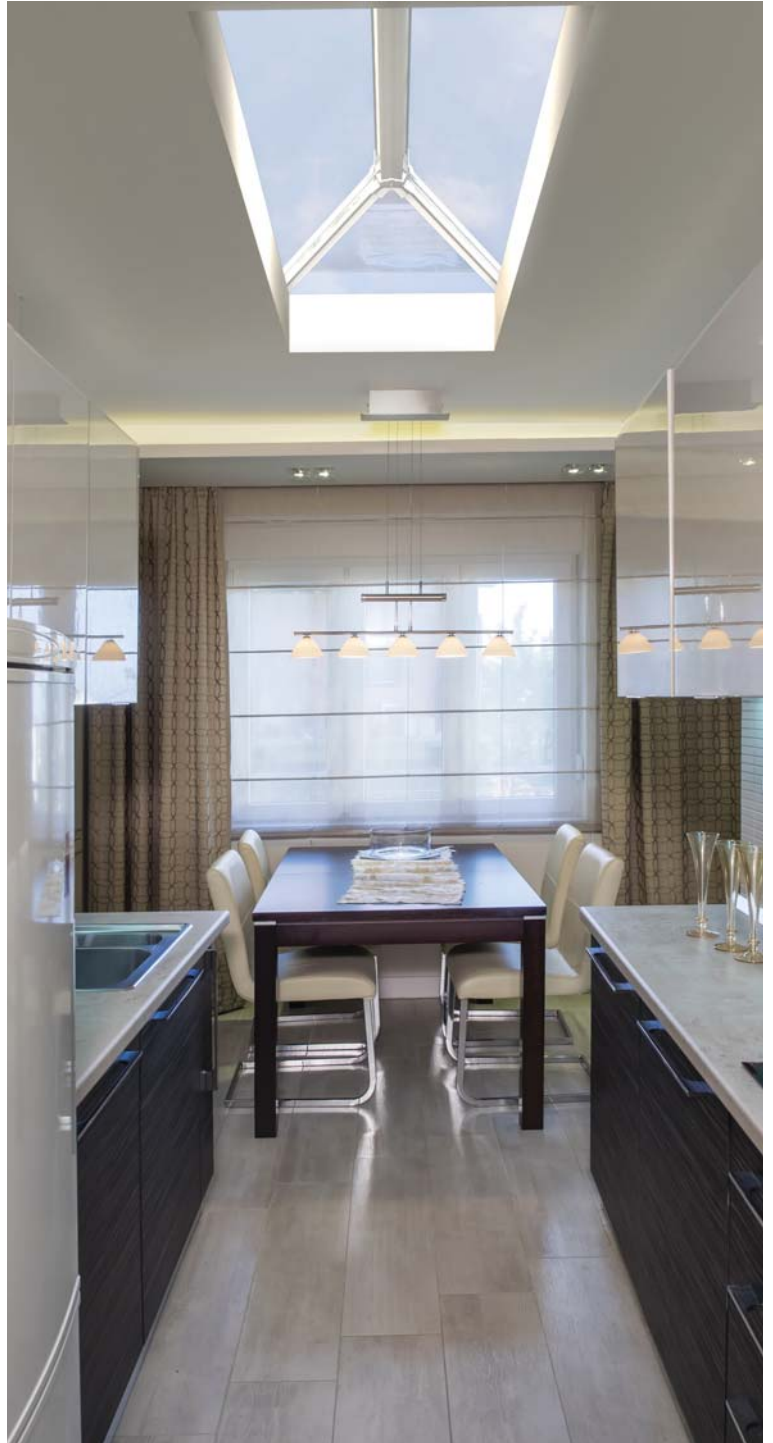
Choose the stylish White PVC option to match your modern window frames, or for that extra “Wow” factor go for the Aluminium option, available in White, Anthracite Grey or Satin Black. Internally the rooflight is clad in white PVC or upgraded to anthracite grey or satin black to either match or contrast the external finish.

#### GLAZING

The highly thermally efficient glazing options will help reduce heat loss and noise pollution, whilst letting the desired amount of light into your room.

#### EXTRAS

Add a roof vent to let in the fresh air – Roof vents are available with a manual opener, automatic opener or an automatic opener with rain and temperature control. \* (roof vents only available in selected sizes).



UltraSky is based on the tried and tested BBA approved Ultraframe Classic roofing system



- GLAZING BAR overhang on each side 90mm (measured horizontally)
- WATERPROOFING LAYER laps onto top of kerb
- TIMBER KERB 150x70mm (not supplied)
- SIZE SET OUT TO EXTERNAL FACE OF KERB
- TIMBER FLAT ROOF

**KEY PERFORMANCE CRITERIA**

Rectangular double ended rooflights, with a width from 1000-2000\*mm and a length from 2000-4000\*mm.

25 degree fixed pitch to all four sides.

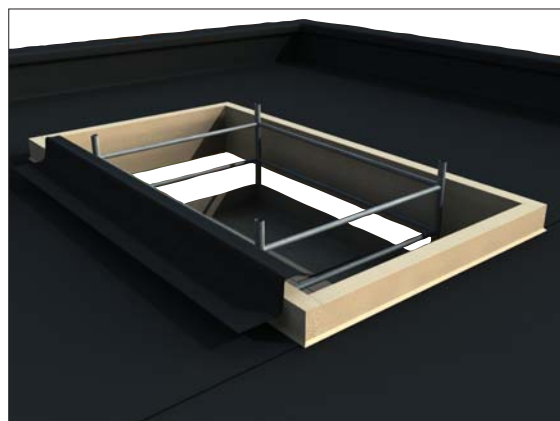
UltraSky is designed around maximum uninterrupted sight lines – bar numbers are reduced (or can be added if you prefer) and the ridge board and hub ends are as unobtrusive as possible.

The thermal performance has been optimised to make it suitable for extensions in domestic properties. Typical U value with 1.0 glass for a 1000mm wide x 2000mm long rooflight is 1.4 W/m<sup>2</sup>K.

Glazing bar top caps in either chambered PVC (white only) or aluminium (White RAL 9003 80% gloss, Anthracite Grey RAL 7016 30% gloss and Satin Black RAL 9005 60% gloss).

\*Width and length are defined as to the external face of the timber kerb (not supplied, recommended to be 150mm high x minimum of 70mm wide).

A timber kerb of 150mm high x 70mm wide( not supplied) must be fitted around the opening in the flat roof – weatherproofing membrane of clients choice laps onto top face of kerb



Thermally broken aluminium ridge body.

Low profile eaves beam (no gutter) designed to be fitted with oversailing 24mm double glazed units (high performance low e, self cleaning and solar control in blue or neutral/clear - units can be supplied with the rooflight).

**IMPORTANT.**  
**SET OUT & DIMENSIONS ARE ALWAYS MEASURED TO EXTERNAL FACE OF KERB**

**ultraSky**  
 by ultraframe



**Loggia Prestige**



**Loggia Premium**



**Loggia Ultimate**

KJM Windows & Conservatories, 9 Mylen Business Centre, Andover, Hampshire, SP10 3HR  
Tel 01264 359355 Fax 01264 353441  
email [sales@kjmgroupp.co.uk](mailto:sales@kjmgroupp.co.uk) web <https://www.kjmgroupp.co.uk>

**QUANTAL**



**ultraframe**  
Transforming light and space